

FOR IMMEDIATE RELEASE
Contact: Terrence Ates
Public Information Officer
(903) 343 - 5451



COVID Vaccinations are Encouraged Due to Increase in COVID-Positive Cases in East Texas

Tyler, Texas (Tuesday, July 20, 2021)

The number of new cases of COVID-19 among persons who live within the 7 counties covered by the NET Health Disease Surveillance Division has increased over the past 2 weeks. Additionally, the number of East Texas Patients in Tyler hospitals doubled from 45 on July 8, 2021 to 85 on July 15, 2021. According to the Texas Department of State Health Services, the Delta Variant is the predominant strain. This is important to note as the Delta variant is more contagious than the original strain of the COVID 19 virus.

The COVID 19 Vaccine is extremely effective even against the Delta variant. If you are 12 years of age and older, you are urged to get the vaccine as soon as possible. The NET Health Immunizations Clinic at 815 North Broadway Avenue in Tyler provides access for any eligible person to receive the Pfizer vaccine (if you are over the age of 12) or the J & J vaccine (if you are over the age of 18). Interested persons can make an appointment to receive either vaccine by visiting the ["Get Vaccinated" section of NETHealthCOVID19.org](https://www.nethealth.org/COVID19).

Smith County residents without health insurance can discuss their risk of exposure to COVID-19 by contacting the NET Health Center for Healthy Living, Monday through Friday from 9:00 a.m. until 4:00 p.m., by calling at (903) 593 – 7474.

If you have been exposed to a person with COVID-19 within the last 14 days, symptoms may appear 2 – 14 days after exposure. Symptoms of COVID-19 may include any of the following:

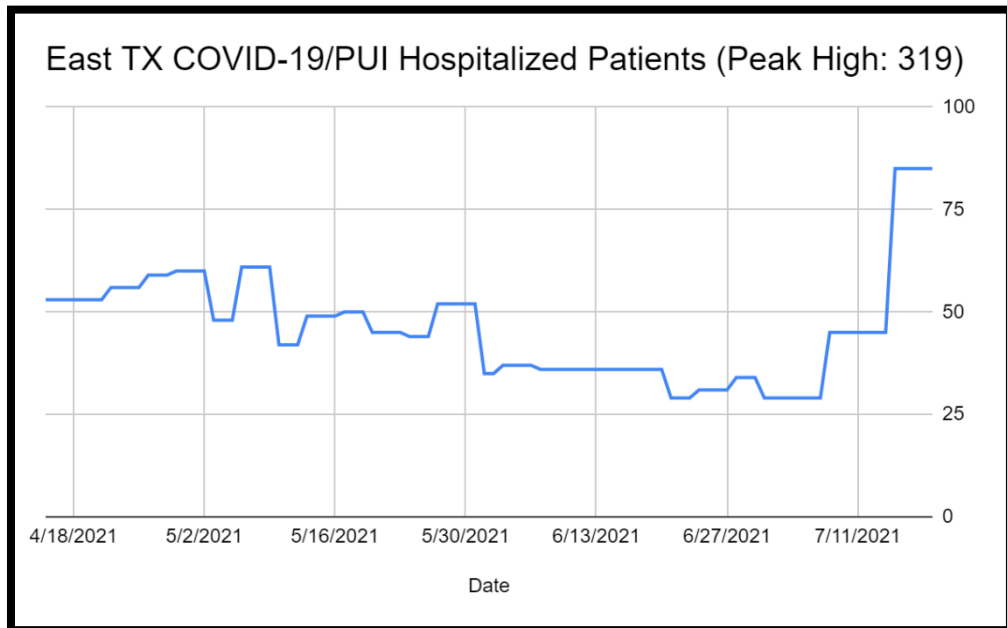
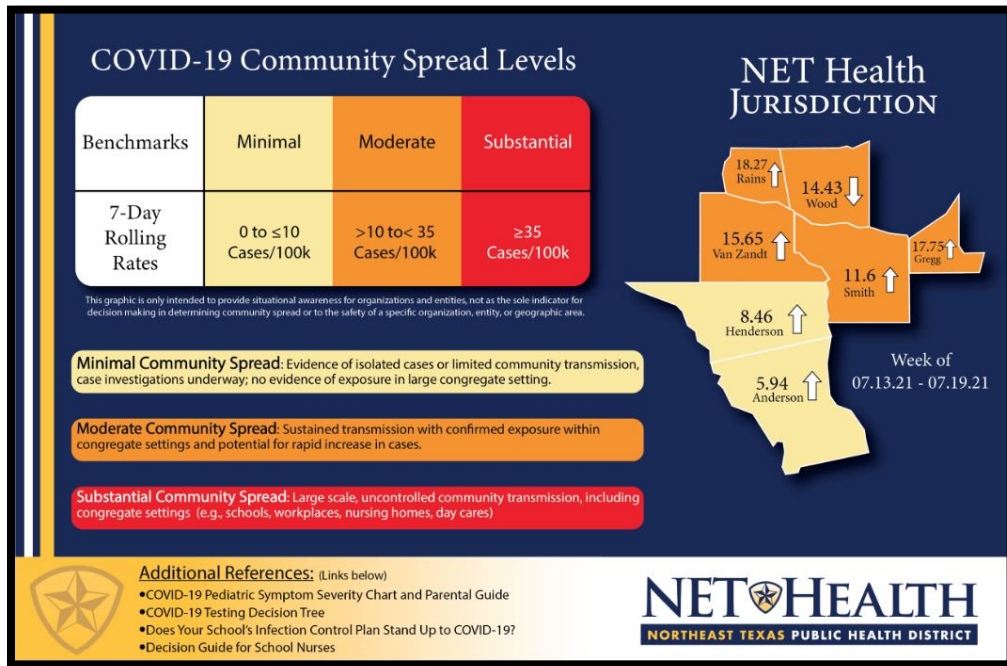
Fever or chills	Headache	Vomiting
Cough	Loss of Appetite	Nausea
Shortness of Breath	Sore Throat	Newly Acquired Loss of
Difficulty Breathing	Nasal Congestions	Taste or Smell
Fatigue	Runny Nose	
Muscle or Body Aches	Diarrhea	

To demonstrate the increased number of COVID 19 cases, please refer to the NET Health 7-Day Rolling Rate of COVID-19 calculates the average number of all COVID-positive cases from the previous seven days, divides the total by the population of the county, then multiplies that

answer by 100,000. NET Health has collaborated with local physicians and epidemiologists to provide weekly updates to the “Community Spread Levels” infographic.

“The infographic is intended to provide situational awareness for organizations and entities,” says Russell Hopkins, the NET Health Director of Public Health Emergency Preparedness.

The “COVID-19 Community Spread Levels” infographic and updates statistics on COVID-19 in East Texas are located within the [“News & Updates” section of NETHealthCOVID19.org](https://www.nethealth.org/news-and-updates).



July 19th 2021	All Positive Cases in NET Health's 7 County Jurisdiction							
	Smith	Gregg	Anderson	Henderson	Van Zandt	Wood	Rains	Totals
March 8 – Dec 11th	11198	5774	2062	2976	2136	1749	403	26298
Dec 12 th – Jan 8 th	2649	1668	536	1020	563	526	178	7140
Jan 9 th – Feb 5 th	4100	2638	474	1152	1009	758	138	10269
Feb 6 th – Mar 5 th	1047	653	110	455	303	240	50	2858
Mar 6 th – April 1 st	578	164	74	98	109	71	14	1108
April 2 nd – April 29th	577	201	121	138	148	76	14	1275
April 30 – May 27	303	223	153	135	117	42	15	988
May 28 – June 24	246	117	51	78	67	39	4	602
June 25 – July 1	67	49	12	21	34	18	10	211
July 2 – 8	94	58	8	28	47	16	5	256
July 9 – 15	160	93	14	34	56	55	13	425
July 19 th	95	91	11	24	32	19	6	278
All Cases	21114	11729	3626	6159	4621	3609	850	51708
Deaths	300	201	82	116	72	82	13	866
Counties	Smith	Gregg	Anderson	Henderson	Van Zandt	Wood	Rains	Totals